



Belgium & Luxembourg

The Global Language of Business

GS1 Partners Event

27-05-2021

Sarah Lard, Sector Manager DIY, Garden & Pet
Patrick Ponsaerts, Sector Manager Healthcare
Dirk Willekens, Senior Product Specialist





Meeting rules

- Presentation in English – slides will be sent asap
- Meeting is recorded
- Please mute during presentation + switch off video sharing
- Different tabs:
 - Chat: feedback
 - Questions: put questions here, we will answer them live at the end of the presentation (or if no time or if too many questions, we will answer under this tab)
 - Polls: at the end
- Thanks and enjoy the event!





Antitrust clause

GS1 Belgium & Luxembourg will not enter into any discussion, activity or conduct that may infringe, on its part or on the part of its members and participants, any applicable competition laws.

By way of example, members and participants shall **not discuss**, communicate or exchange any commercially **sensitive information**, including non-public information relating to prices, marketing and advertisement strategy, costs and revenues, trading terms and conditions and conditions with third parties, including purchasing strategy, terms of supply, trade programs or distribution strategy.

This applies not only to discussion in formal meetings but also to informal discussions before, during or after meetings.

<http://www.gs1belu.org/nl/over-ons/bestuur/deontologische-code>
<http://www.gs1belu.org/fr/administration/code-deontologique>



Intellectual Property (IP) clause

By their mere presence at the meetings of consulting bodies and/or working groups of GS1 Belgilux, **participants release all intellectual property rights** on information (oral and written) provided by them during the meetings of consulting bodies and/or working groups of GS1 Belgilux, regardless of whether the members are represented by employees or by contractors delegated by them.

The information thus provided by GS1 members can and will be processed (without additional message) by GS1 in - without wishing to be exhaustive – GS1 protocols, GS1 standards, GS1 reports,... As of then this registered and (un)processed information belongs exclusively to GS1.

(see also article 2.2 of the General Conditions of GS1 Belgium & Luxembourg approved by the Board on October 28 2015)

Privacy disclaimer

- This Webinar/event will be recorded in order to be able to share it with the participants and partners/members of GS1.
- You are kindly invited to ask questions at the FAQ session before the end of the Webinar/event.
- By participating you are authorizing GS1 to process the data that you share for the realization and distribution of this Webinar/event.



Topics

- Welcome
- **My Product manager (MPM) update 20' (SL)**
- Healthcare 30' (PP)
- Sectoral data exchange: HO2C (EANCOM - EDIFACT) 15' (DW)
- Cross-sector & cross-border data exchange (Peppol) 30' (DW)
- GS1belu knowledge centre (existing & new) 10' (DW+SL)



My Product Manager (MPM) - Update

What changed since our last event ?



MPM – Datamodel releases

- New datamodel releases per sector
 - DIY, Garden and Pet: [Planning 2021](#)
 - FMCG/FS: [Planning 2021](#)

Release 1	18 december 2020
Release 2	19 maart 2021
Release 3	18 juni 2021
Release 4	17 september 2021



**Went into
production
on 15/05**

MPM – Datamodel releases

Welcome to GS1
The Global Language of Business
Belgium & Luxembourg

EN | FR | NL

Test supplier DIY
5410000111128

JT Jef Tester
GS1 Belgium & Luxem...

Dashboard My Products My Brands My Publications **My Reports**

Supplier Report

GLN:
5410000111128

Number of GTIN's
6

Current data quality
100.00%

[Filter](#)

Your validation failures

You have no validation errors.
Keep up the good work!

Tradeltem status overview

Status
● Active

Active 100%

Need help with this report?
Watch our [video tutorial](#) or find more information in [our manual](#).

Trade Item overview

GTIN	Status	Brand	GPCCategoryCode
01915400000903	Active	HammerTime	10003500
05400000000010	Active	DHZTD TEST BRAND	10002121
05400000000027	Active	DHZTD TEST BRAND	10003500
05400000000034	Active	DHZTD TEST BRAND	10003500
05400000000041	Active	NIEUWMERK	10005639
05410000023674	Active	DHZTD TEST BRAND	10003984

[Product details](#) [Overall details](#)

- Datamodel update 15/05 → new rules influences DQ scores*
- Suppliers should fill in data or correct it
- Changes visible in reporting tool of MPM
- Click-through GTIN to correct



MPM - Documentation

- Technical documentation (API) is **updated** on our website:
 - Upload: [Here](#)
 - Download: [Here](#)

- FMCG & Foodservice sector:

- [Datamodel](#) →
 - [codelist](#)
- [External-contract-v2.0.json](#)
- [Upload open API Specification.JSON](#)
- [Upload open API Specification.YAML](#)

Full Batch upload: All data are uploaded at night and prepared on an SFTP server

Incremental upload: Only the new products or changed products are prepared on the SFTP server

PLEASE NOTE: these options are available only for the identity cards or the products that comply with the B2C (data specified on the label) or FMCG Benelux data models.

Technical documentation:

- Do-it-Yourself, Garden & Pet sector:

- [Datamodel](#) →
 - [codelist](#)
- [External-contract-v2.0.json](#)
- [Upload open API Specification.JSON](#)
- [Upload open API Specification.YAML](#)

- [Datamodel FMCG & Foodservice](#) →
- [Datamodel Do-it-Yourself, Garden & Pet](#) →
- [Codelist](#) →
- [External-contract-v2.0.xsd](#) →



MPM – Datamodel releases

- When will which datamodel be accessible in MPM ?
 - DIY, Garden and Pet: Available
 - Healthcare – ECHO: Available* API download not yet available
 - FMCG/FS - B2C: Available
 - FMCG/FS – B2B: Available under certain conditions*

* No publications to other target markets than BE/LUX/NL



MPM – Migration FMCG/FS [updated]

- Old Trustbox users already migrated to My Product Manager in 2020 (B2C model)
- Users currently using the CDB (B2B2C model) will be migrated in **Sept/oct of 2021***
- However, under some prerequisites, new users can directly be setup onto MPM for B2B2C
 - We will assess this case by case
 - If not possible, setup on CDB and migrated later on
 - We have a small tool to migrate data from MPM (B2C) to CDB so you don't have to re-enter data twice

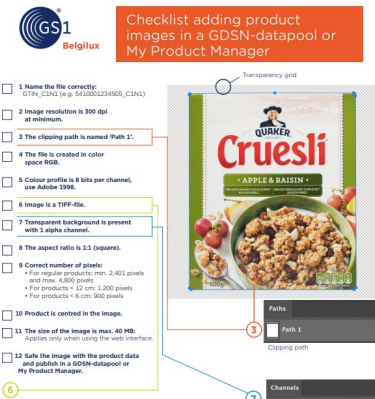


MPM – FOCUS: Bulk edit and excel edit

- Two possibilities to modify data in My Product Manager through the WebUI
 - Edit products through excel up and download for suppliers in the webinterface **[NEW]**
 - Edit products through bulk edit action → only useful when you want to add the same value onto several products

MPM – FOCUS: Product Images [Updated]

- Harmonised Benelux cross-sector guideline for product images
- Here is a short checklist to test the compliance of images: [FMCG DIY](#)
- **Validation rules were added to check presence and compliencen of images**
- **FMCG:** need for at least one packshot per product since 01/01/2021
- **DIY:** can add picture(s) of your products and retailers will process them 01/05/2021





MPM – FOCUS: Read-only [reminder]

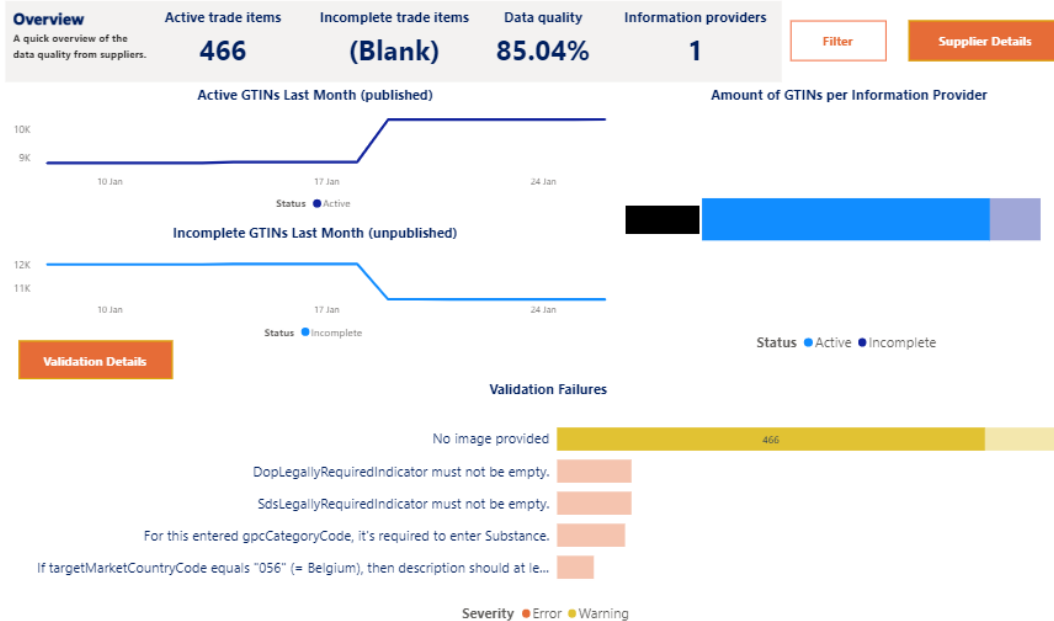
- Are you a supplier using another GDSN datapool or another solution ?
- Do you have an automated connexion directly to GDSN ?

Publish your data to MPM by adding a publication to GLN: 5410000876546

- You can visualise your data in read-only in the WebUI
- Access to embedded data quality report
- No cost

MPM – Reporting

Recipient Report



- Recipients also have access
- Report for all data received by recipient
- Click through by supplier

Questions? Comments?

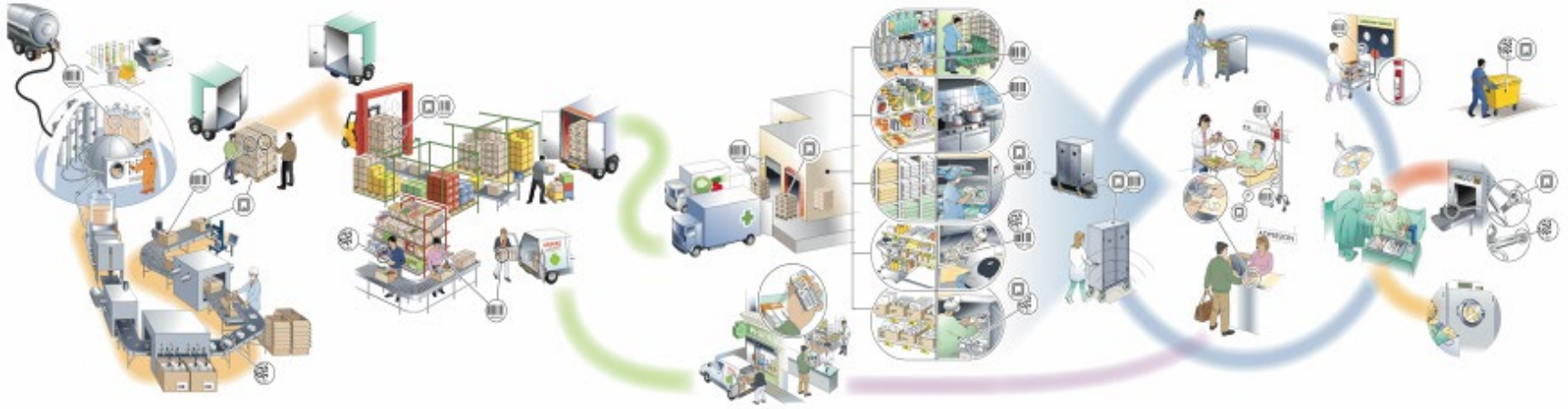
Contact slard@gs1belu.org



Topics

- Welcome
- My Product manager (MPM) update 20' (SL)
- **Healthcare 30' (PP)**
- Sectoral data exchange: HO2C (EANCOM - EDIFACT) 15' (DW)
 - HO2C next release
 - HO2CtoPeppol mapping tool
 - Other news (validation tool, the future of HO2C, ...)
- Cross-sector & cross-border data exchange (Peppol) 30' (DW)
- GS1belu knowledge centre (existing & new) 10' (DW+SL)

Voluntary, Global Healthcare User Group



GS1 Healthcare is a neutral and open community bringing together all related healthcare stakeholders to lead the successful development and implementation of global GS1 standards enhancing **patient safety, operation** and **supply chain efficiencies**.

Our vision



- The vision of GS1 Healthcare is to be the recognised, open and neutral source for regulatory agencies, trade organisations and other similar stakeholders seeking input and direction for global standards in healthcare for



Patient
Safety



Supply chain
security &
efficiency



Traceability



Product
data

GS1 Healthcare: an expanding, committed community of globally engaged stakeholders...



... in Belgium & Luxemburg there are over 500 HC companies and number is increasing

Leading hospitals implement GS1



... in Belgium & Luxemburg there are over 30 hospitals and number is increasing



Legislations – types of healthcare products



Medicines



Medical Devices





Medicines

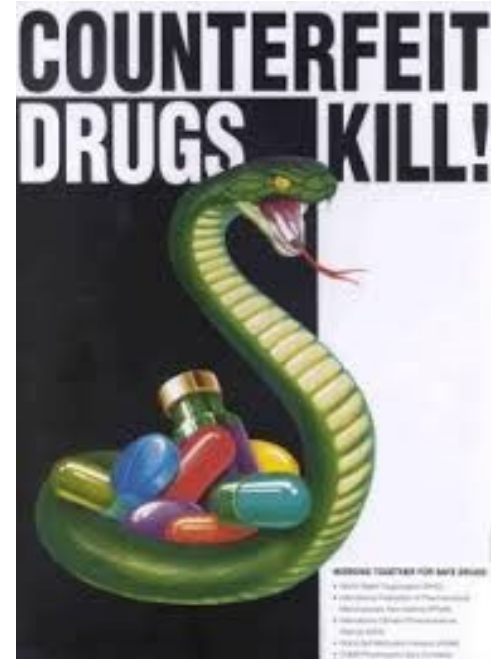


Background Counterfeiting medicine



Definition WHO

- A counterfeit medicine is one which is deliberately and fraudulently mislabeled with respect to identity and/or source.
- Counterfeiting can apply to both branded and generic products and counterfeit products may include products
 - with the correct ingredients or with the wrong ingredients
 - without active ingredients
 - with insufficient active ingredients or
 - with fake packaging.



SFFC = Spurious, Falsely labelled, Falsified, Counterfeit

The Impact



According to Interpol more than **one million people** die each year from counterfeit drugs!



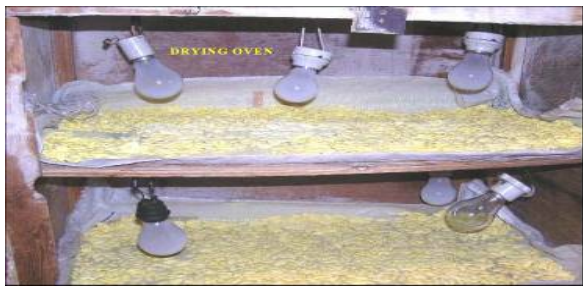
In some areas of Asia, Africa and Latin America counterfeit medical goods can form up to 30% of the market

The “favourites”



- Antibiotics
- HIV/AIDS
- Cancer medication
- Antidepressants
- Drugs to treat erectile dysfunction
- Weight-loss supplements
- Anti-Malaria medication
- Anti-Allergica
- COVID 19
- ...and more!

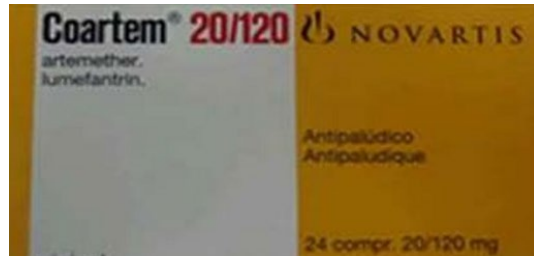




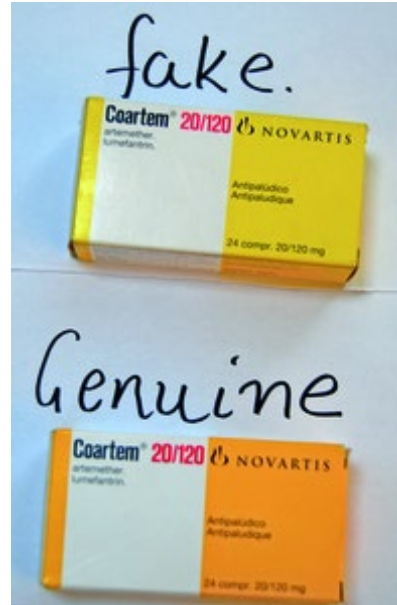
A counterfeit medicines « factory »

- The Pharmaceutical industry deals with the most frequently counterfeited products worldwide.
- This is a manufacturing process: the tableting machine and drying process belong to a criminal gang of **counterfeiters**.
- Where's the traceability, GMP*, safety, lot management?
* *Good manufacturing practices*

Introduction

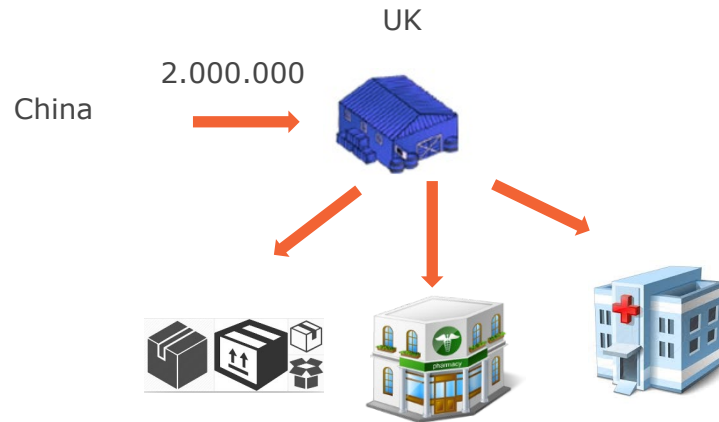


Introduction



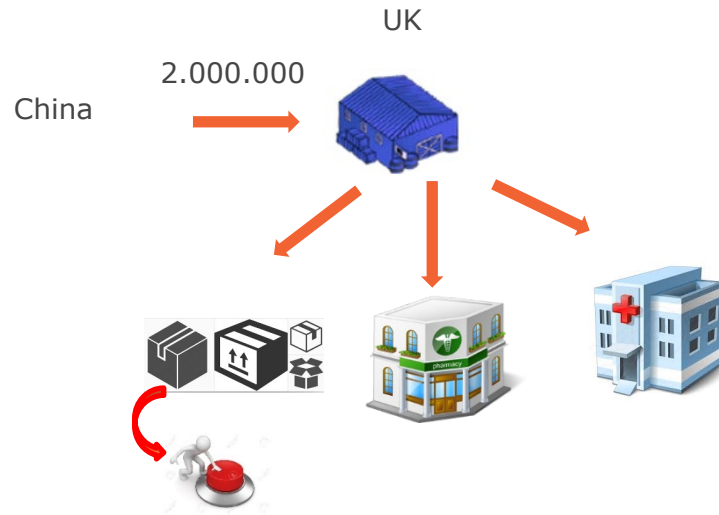
Falsified medicines

Peter Gillespie case



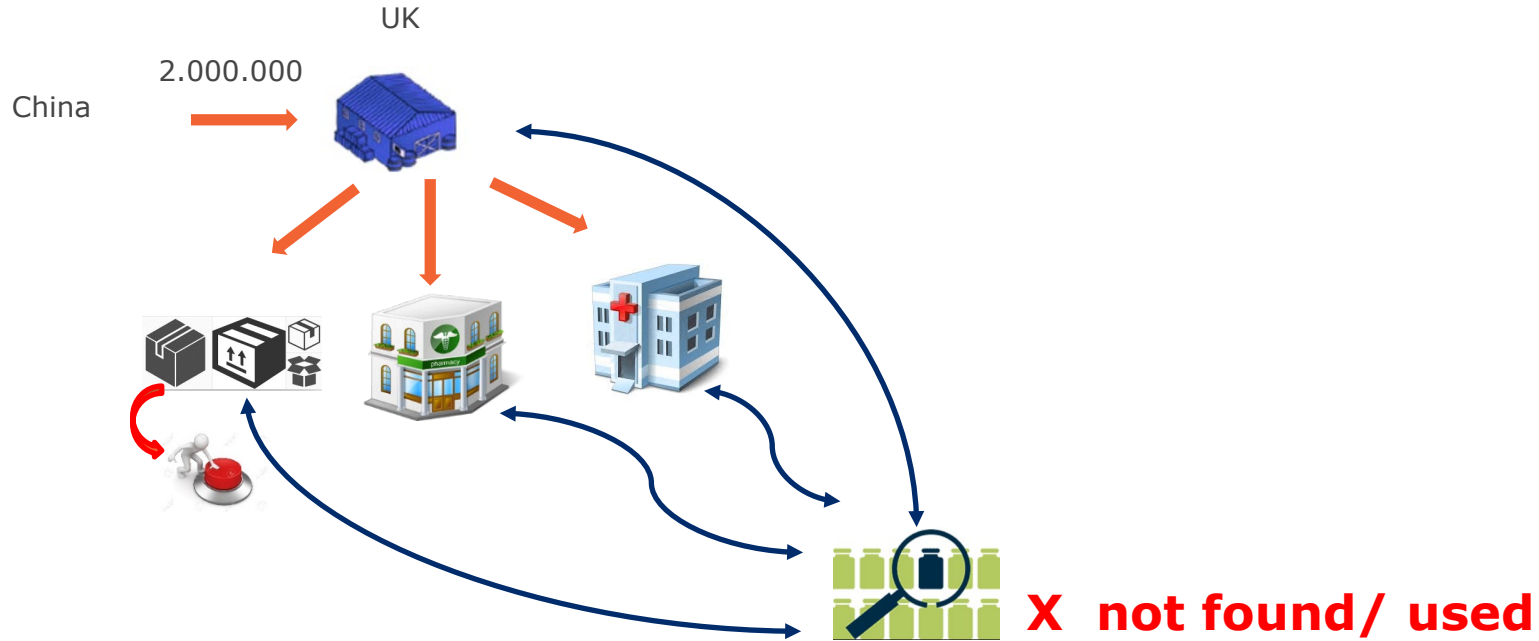
Falsified medicines

Peter Gillespie case

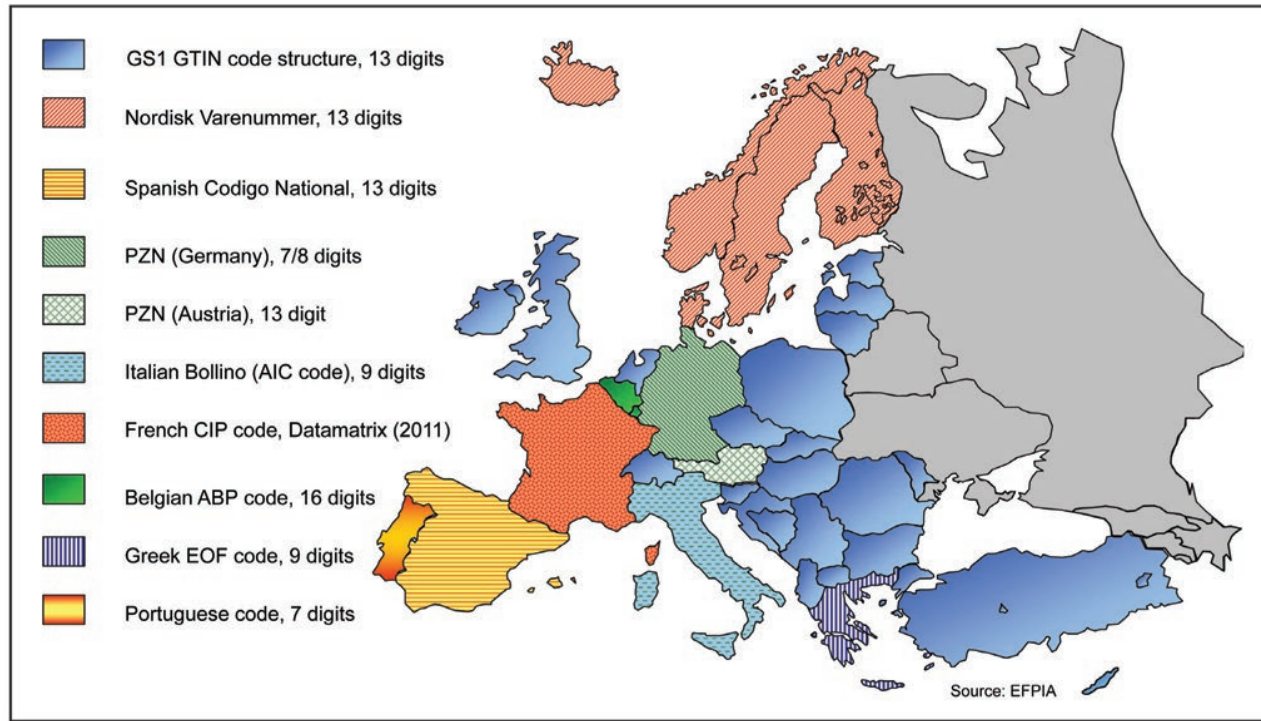


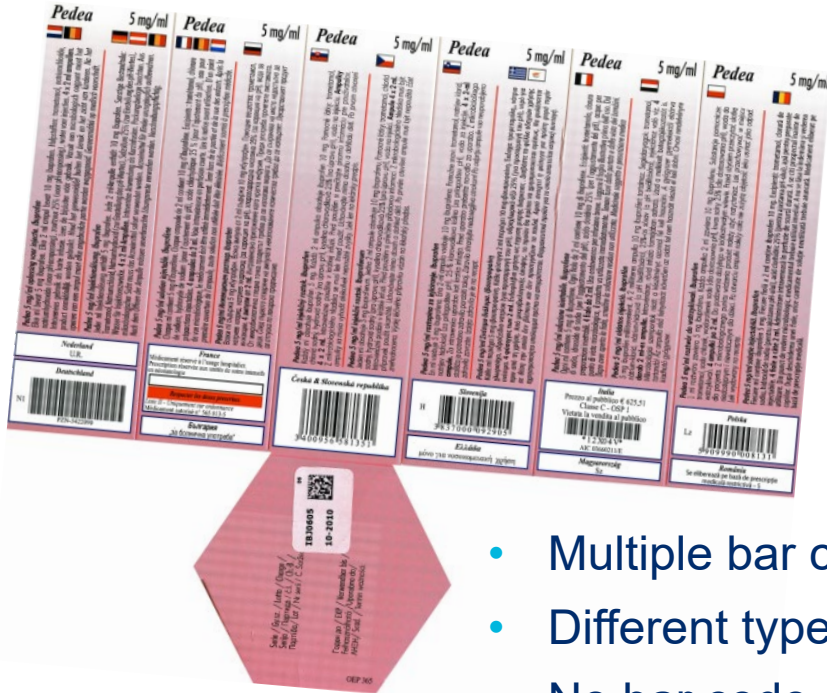
Falsified medicines

Peter Gillespie case



Package codes EU





- Multiple bar codes on one package – which one to scan?
- Different types of bar codes – inconsistency; incompatibility
- No bar code – need to bar code; re-package; re-label

EU Anti-Falsified Medicines Legislation: Directive 2011/62/EU



4 Pillars

1. Safety features

Mandatory identification and authentication of individual medicine packs.

3. Active substances

Tougher rules on importation of APIs; reinforced controls and inspections of API manufacturers.



2. Reinforcing the distribution chain

Strengthened GDP and requirements for wholesale distributors

4. Internet sales

A common, EU-wide logo to identify legal online pharmacies.

**GDP =
Good
Distributi
on
Practice**

Good manufacturing practice (GMP)



Click to verify if the website is operating legally

https://ec.europa.eu/health/human-use/falsified_medicines_en

Source: Presentation Jerome Lepeintre. GS1 HC Congress Beijing, October 2016

EU FMD

Delegated regulation 2016/161



- Detailed rules for the safety features appearing on the packaging of medicinal products for human use
- Published in the Official Journal on 9th February 2016
- Timeline:

Feb 9 2016 Official publication of the DA on Safety Feature

Feb 9 2025 Official Deadline Belgium, Greece and Italy

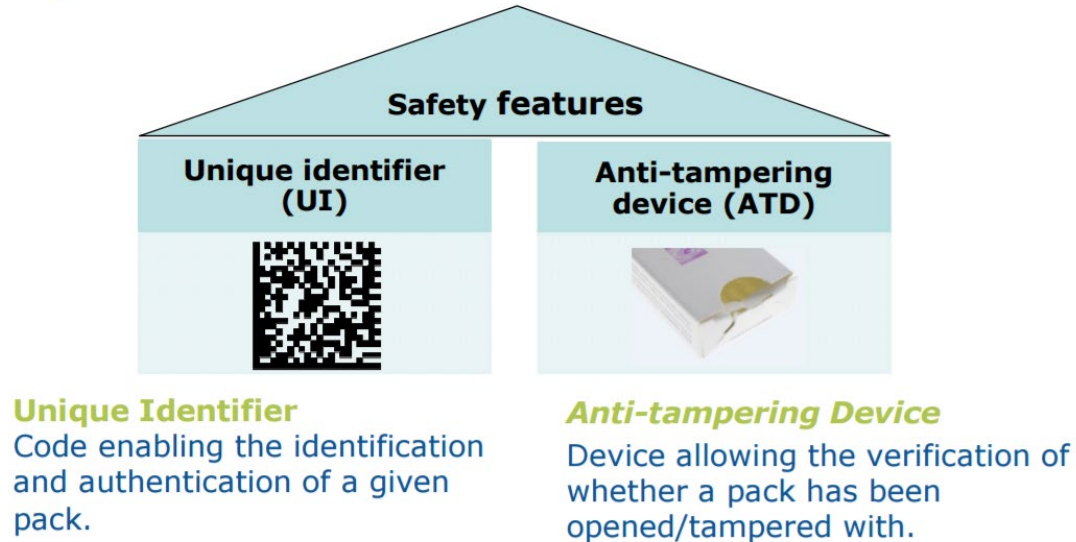


Feb 9 2019 Official Deadline for all MS **except Belgium, Greece and Italy**

Belgium has officially communicated that it will follow the deadline of **Feb 9 2019**



Safety Features



Source: Presentation Jerome Lepeintre. GS1 HC Congress Beijin, October 2016

FMD: safety features



EU FMD	GS1 Standards
EU FMD Falsified Medicines Directive	GS1 Standards Product Identification
Manufacturer manufacturers of medicinal products bearing the safety features	Brand Owner
Safety Features Unique Identifier	N/A
4 Data Elements <ul style="list-style-type: none">- Product code- Batch/Lot Number- Expiry Date- Serial Number	GTIN and variable data using application identifiers (AI) <ul style="list-style-type: none">- GTIN, Global Trade Item Number: AI(01)- Batch/Lot Number: AI (10)- Expiration Date: AI (17)- Serial Number: AI (21)
Data Carrier DataMatrix ECC200	2D GS1 DataMatrix



FMD – Medicines in scope



- **In scope**

- Medicinal products subject to prescription
- Except the medicines described on the white list:
 - Radionuclides, medicinal gases, IV solutions, contrast media, homeopathic medicines
- Omeprazole capsules

- **Out of Scope**

- Over-the-Counter medicines (=OTC)

Falsified Medicines Directive



CNK code



2147-205

Reimbursement:

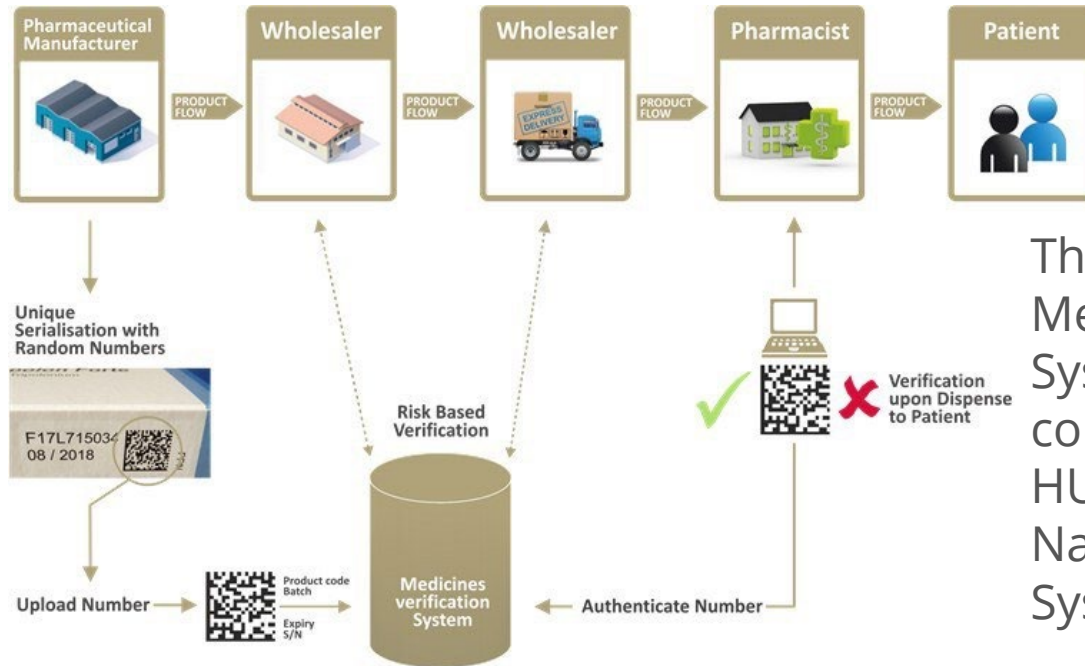
CNK + unique numerical code



0123652327869349



Medicines Verification System



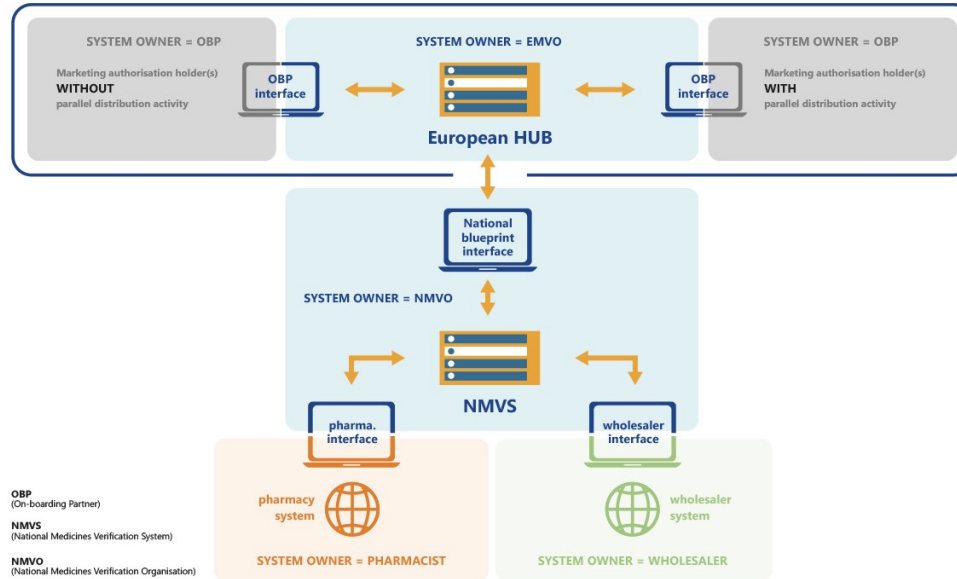
The European Medicines Verification System (EMVS) is composed of a central HUB and the different National Verification Systems (NMVS).

Source: <https://bemvo.be/start/medicines-verification-system/>

Medicines Verification System



System Landscape 2



Source : <https://emvo-medicines.eu/new/wp-content/uploads/System-Landscape-2.jpg>



Medical Devices



UDI - what was driving the Need ? Issues



Faulty hip implant shows up failings of EU regulation
Cohen, Deborah. *BMJ : British Medical Journal (Online)*; London Vol. 345. (Oct 23, 2012).



UDI - what was driving the Need ? Technology



UDI - what was driving the Need ? Duplicates



- Product catalog numbers include duplicate identifiers for the different products across manufacturers

Manufacturer	Catalog #	Description
Medtronic	305905	Mosaic ® 305 Porcine Heart Valve
BD	305905	3mL BD SafetyGlide™ Syringe
J & J	305905	Protectiv ® IV Catheter System

Example

UDI - what was driving the Need ? Duplicates

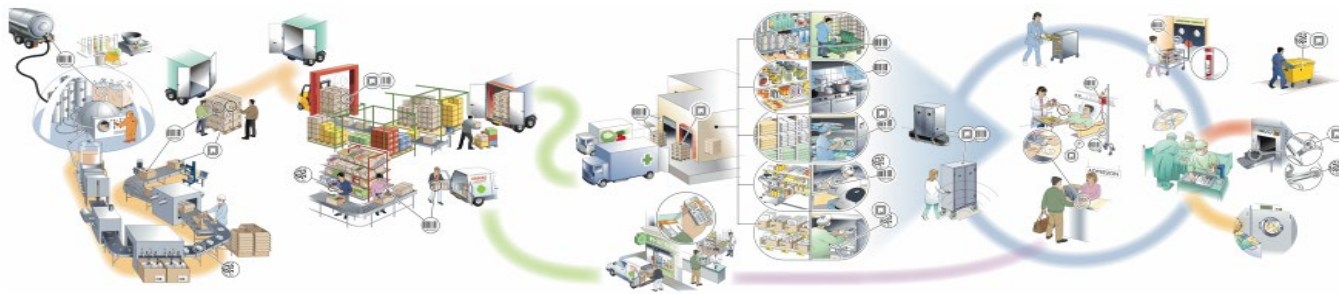


- Product catalog numbers include duplicate identifiers for the different products across manufacturers

Manufacturer	Catalog #	Description
Medtronic	305905	Mosaic ® 305 Porcine Heart Valve
BD	305905	3mL BD SafetyGlide™ Syringe
J & J	305905	Protectiv ® IV Catheter System

Example

- Product re-identification by every stakeholder in the supply chain, making product tracking efforts extremely difficult



UDI - what was driving the Need ? Duplicates

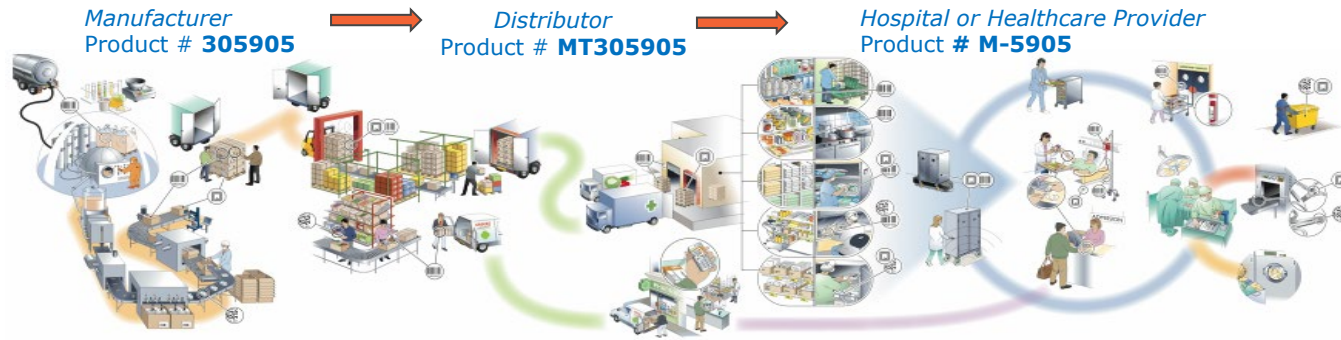


- Product catalog numbers include duplicate identifiers for the different products across manufacturers

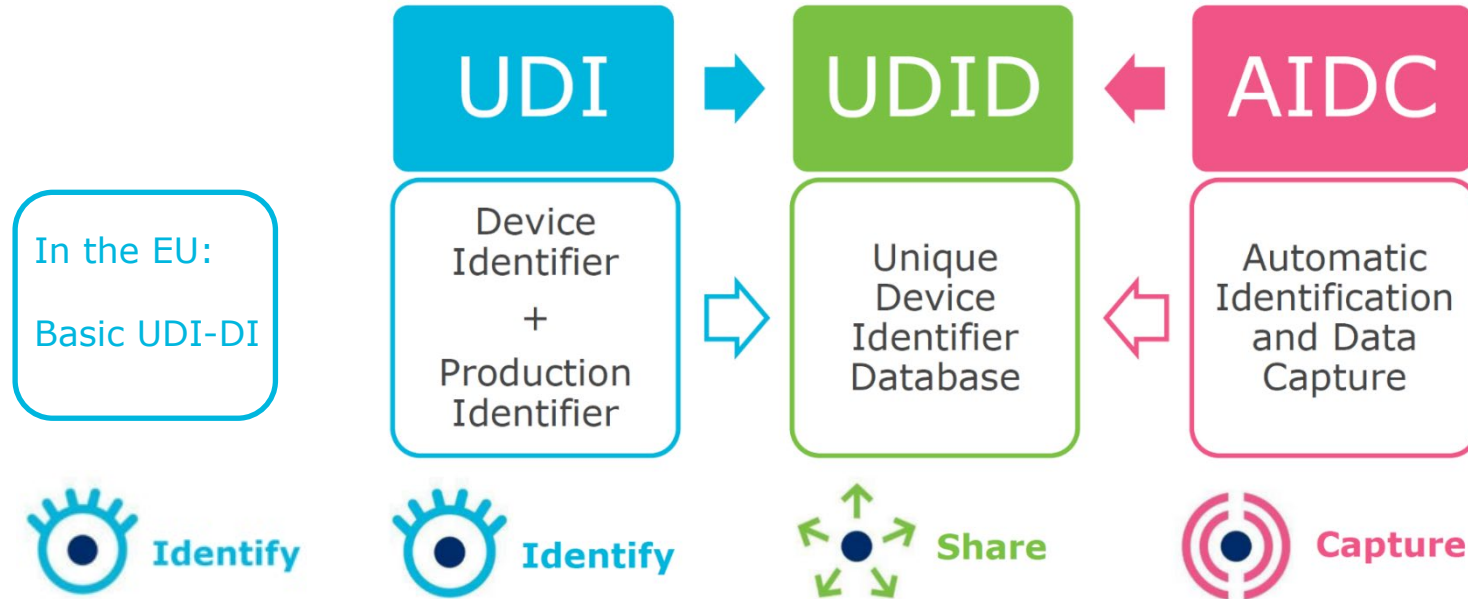
Manufacturer	Catalog #	Description
Medtronic	305905	Mosaic ® 305 Porcine Heart Valve
BD	305905	3mL BD SafetyGlide™ Syringe
J & J	305905	Protectiv ® IV Catheter System

Example

- Product re-identification by every stakeholder in the supply chain, making product tracking efforts extremely difficult



UDI and the GS1 System of Standards



Composition of the UDI (GTIN) 1/3



Device Identifier (DI)

Composition of the UDI (GTIN) 2/3



Device Identifier (DI)



Product Identifier (PI)

Expiry Date
Batch Number
Serial Number

Composition of the UDI (GTIN) 3/3



UDI in GS1 AIDC terms

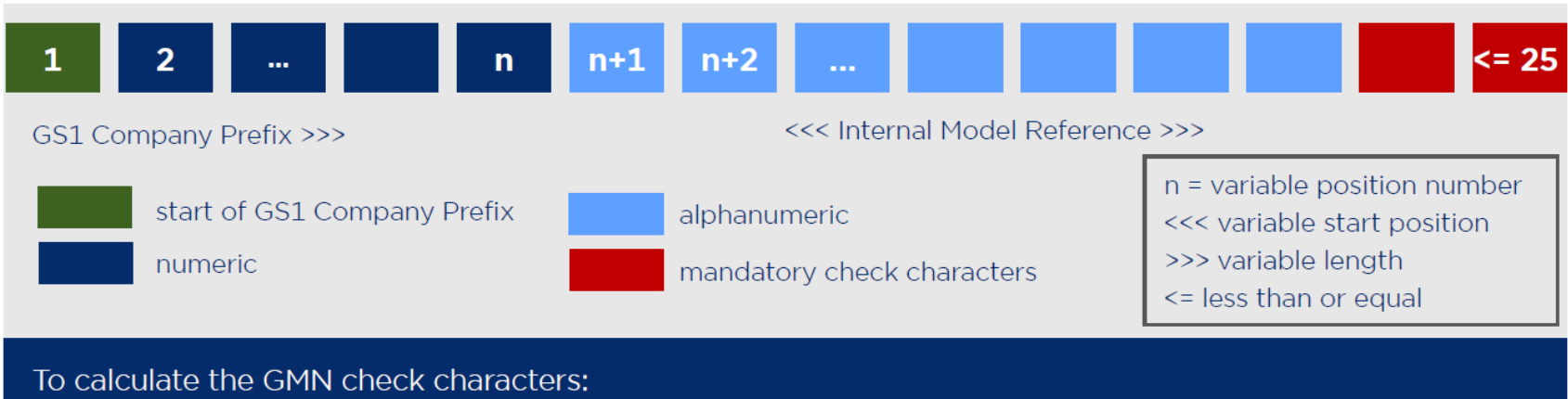


Required
in the EU

UDI regulatory requirements	GS1 Standards
<p>Basic UDI-DI « New » level of identification in the EU</p>	<p>GMN (Global Model Number) <i>No Application Identifier (AI) for regulated medical devices</i></p>
<p>UDI-DI * Device Identifier (DI)</p>	<p>GTIN * Global Trade Item Number</p>
<p>UDI-PI * Production Identifier (PI) <i>(if applicable)</i></p>	<p>AI * Application Identifier (AI)</p> <ul style="list-style-type: none"> • Expiration date AI(17) - e.g. 141120 • Batch – lot AI(10) - e.g. 1234AB • Serial number AI(21) - e.g. 12345XYZ • Manufacture date AI(11) - e.g. 250717
<i>Production Identifier data will vary by medical device type and manufacturer current practice.</i>	
UDI-DI + UDI-PI = UDI	GTIN or GTIN + AI(s) = UDI

* The HRI Format shall follow the rules of the UDI Issuing Entity

Composition of the GMN (Basic UDI-DI)



<https://www.gs1.org/services/check-character-calculator>

GS1 Global Model Number (GMN) v.2



For regulated healthcare medical devices:

GS1 Company Prefix + alphanumeric internal model reference + 2 check-characters

Length: max 25 characters (23+2)

- Key in EUDAMED
- Used on relevant documentation
- Independent of packaging
- **Never on the packaging, label or device**
- **Never used in a data carrier**
- [Guidance on Basic UDI-DI assignment](#)



Example of Basic UDI-DI on regulated documentation:

GMN : 5149854J856MRN

└──┬──┘	└──┬──┘	└──┬──┘	└──┘
Data title	GCP	Model reference number	Check character

[Basic UDI-DI \(English Version\) - YouTube](#)

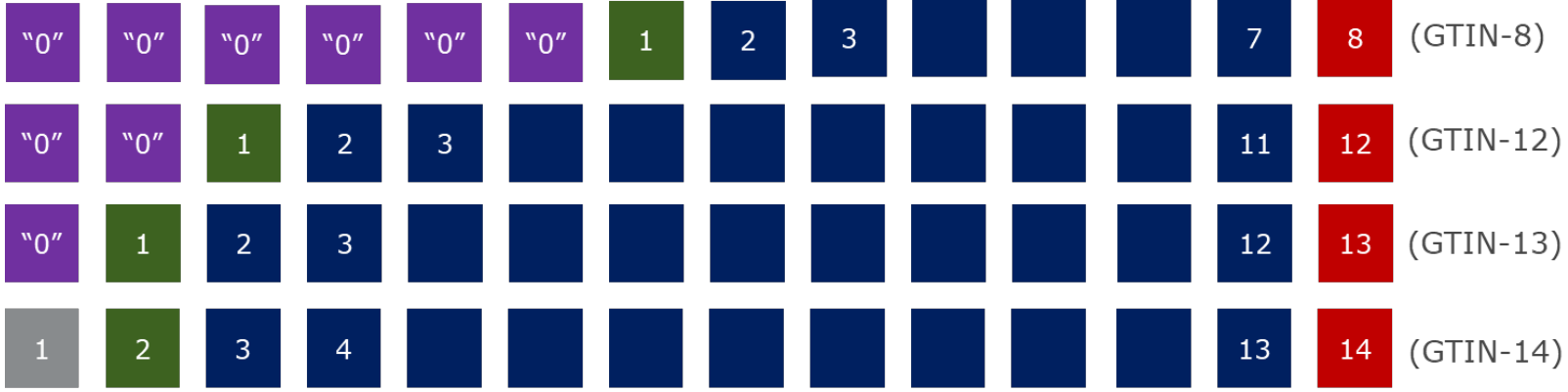
Composition of the GTIN (UDI-DI)

GTIN in a 14-digits format for UDI



Pad or Fill Zero(es)>>>

<<<Right aligned GTIN string



GS1 Company Prefix >>> indicator digit

 Check Digit

 <<<Item Reference
 <<< variable start position

start of GS1 Company Prefix

 "0" Zeros inserted

>>> variable length

<https://www.gs1.org/services/check-digit-calculator>

Reference documents



GS1 General Specifications – describes how GS1 keys & data carriers should be used
<http://www.gs1.org/barcodes-epcrfid-id-keys/gs1-general-specifications> - annual publications

GS1 Healthcare GTIN Allocation Rules – GTIN assignment in Healthcare with Healthcare specific examples [Rules Standard \(gs1.org\)](http://www.gs1.org)

How to implement UDI?

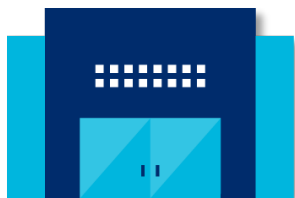
UDI system step by step



1. Assess what are the products falling under the MDR/IVDR scope
2. Assess what is the relevant Class for each type of product
3. Define/select one of the 4 Issuing Agencies
4. Use your GCP
5. Basic UDI-DI (GMN) and UDI (GTIN & AIs)
8. EUDAMED registration
9. Barcodes and HRI (deadlines depending on the risk class)
10. Maintenance

The responsibility for compliance with the UDI requirements remains the entire responsibility of the GS1 user, not GS1

Trade Item identification rules



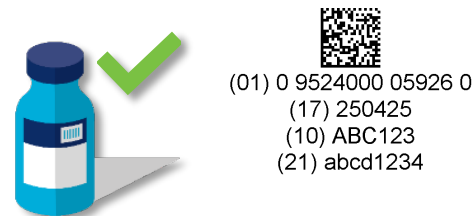
The brand owner allocates the GTIN



One trade item, one GTIN



A GTIN for every different variant of a trade item

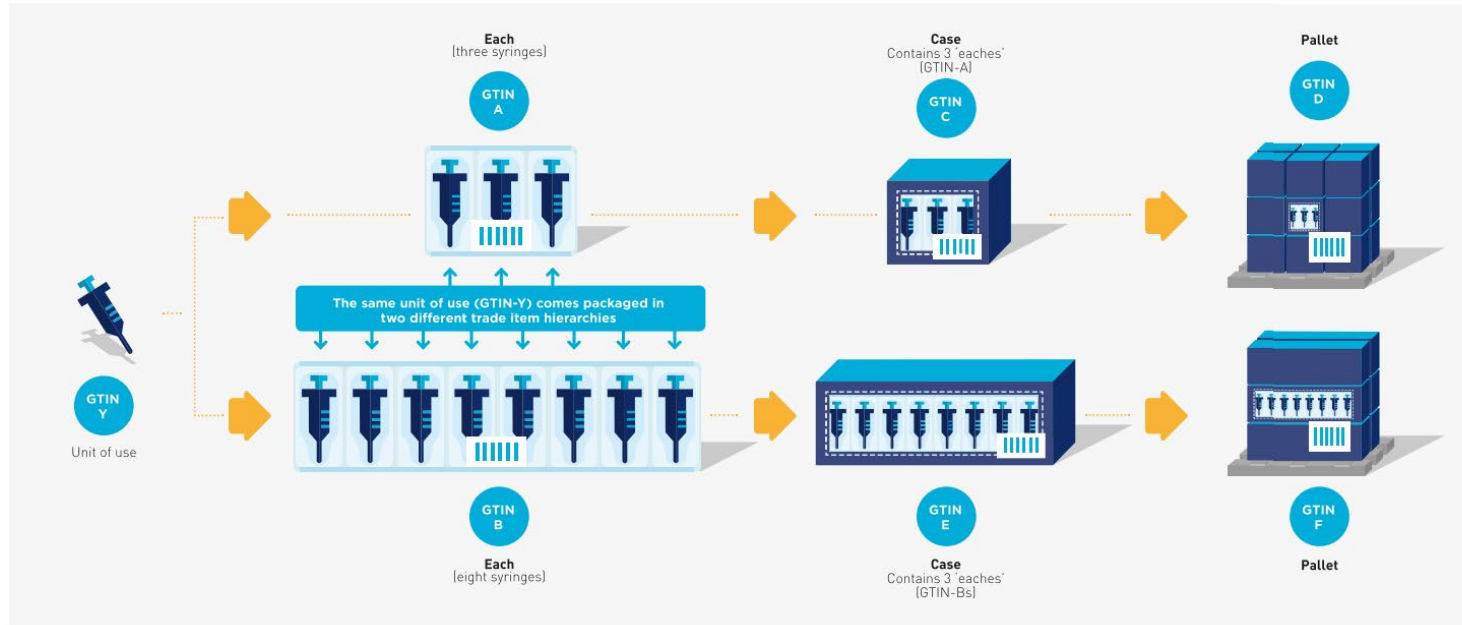


Re-use of a GTIN is not permitted

A product = one GTIN



Each different packaging level requires a separate GTIN



GS1 Healthcare GTIN Allocation Rules



Purpose and regulatory disclaimer

This document aims at providing a globally harmonised framework for the implementation of the GS1 standards in order to improve supply chain efficiency and ensure patient safety.



Important: The Healthcare GTIN Allocation Rules represents a minimum requirement. Please be advised that there may be regulation(s) in your market area that are more stringent and SHALL be adhered to. Refer to the [Healthcare Public Policy Interactive Map](#) for more information.

UDI in GS1 AIDC terms...



ISO compliant machine-readable Data Carriers on the product (*via label or Direct Marking*) or its packaging, which contain the UDI : 1D/Linear & 2D/Matrix bar code symbols, RFID.

Data Carriers

The manufacturer must determine whether their products fall under Direct Marking criteria or whether their products meet an existing exception.



“Direct Marking” - not “Direct Part Marking” - on devices that are “to be used more than once and reprocessed before use”. It means that the mark must be useable for the useful life of the product.

UDI Example of label



MOSAIC® 305 CINCH® II

A

21 MM

REF → 305C221
Reorder Number

Size → 21 MM

Use By → 2016-07-12

SN → 21A11F4855
Serial Number

MOSAIC® 305 CINCH® II
Porcine Bioprosthesis Aortic Valve

Aortic

AOA®

(01)00643169001763(17)160712(21)21A11F4855

STERILE LC
Sterile LC. Device has been sterilized using Liquid Chemical Sterilants according to EN/ISO 14169.

PYROGEN
Nonpyrogenic

Do Not Resterilize

Do Not Reuse

Quantity : 1

Temperature Limitation
+5 °C / +41 °F

USA Rx only
For US Audiences Only

www.medtronic.com/manuals
Consult Instructions for Use

MOSAIC® 305 CINCH® II
Porcine Bioprosthesis Aortic Valve

Aortic

AOA®

Check temperature indicator prior to use

Manufacturer:
Medtronic, Inc.
710 Medtronic Parkway
Minneapolis, MN 55432

Manufactured at:
Santa Ana, CA USA

© 2011 Medtronic

Device Identifier (DI)
"Static" portion
GTIN (product identifier)

Production Identifier (PI)
"Dynamic" portion
Application Identifiers (e.g. serial, lot number & expiry date)

UDI Example of label



H.E.L.P. Acetate Buffer pH 4.85 **4 x 3000 ml**


CA/GB Sodium acetate buffer solution for use ONLY with extracorporeal H.E.L.P. apheresis
Caution: Federal Law (U.S.) restricts this device to sale by or on order of a physician.

CA/FR: Solution tampon d'acetate de sodium destinée à une utilisation UNIQUEMENT avec aphérèse H.E.L.P. extracorporelle

sterile / stérile
Endotoxin-FREE and non-pyrogenic/ Ne contient pas d'endotoxines et non-pyrogène
SINGLE USE only, discard unused portion/ À USAGE UNIQUE seulement, jeter la portion inutilisée
DO NOT add any additives/ NE PAS ajouter d'additifs
NOT for intravenous infusion/ NON adapté à une perfusion intraveineuse
ONLY USE if solution is clear and colourless/ UTILISER UNIQUEMENT si la solution est limpide et incolore
ONLY USE if container and connections are not damaged/ Ne pas utiliser si l'emballage et les connections sont endommagées
Keep out of the reach of children/ Conserver la solution hors de portée des enfants

Sodium acetate x 3 H₂O 27.22 g/l
Acetic acid 99% 6.82 g/l

DIN: 02373807



074113/B

Manufacturer:
B | BRAUN
B. Braun Avitum AG
34209 Melsungen
Germany

Canadian Distributor:
Chief Medical Supplies Ltd.
411-19th Street S.E.
Calgary, Alberta T2E 6J7

Production site:
B. Braun Avitum AG
Kattenvenner Str.,32
49219 Glandorf, Germany
Made in Germany

US Distributor:
B. Braun Medical Inc.
Bethlehem, PA 18018-3524

CE 0123 STERILE 4°C - 25°C

PVC Read carefully instructions for use Do not reuse

REF Article no.: 4113
LOT Batch no.: 0350214
Manuf. date: 2014-03-04
Expiry date: 2017-02-28

Device Identifier (DI)
"Static" portion
GTIN (product identifier)

Production Identifier (PI)
"Dynamic" portion
Application Identifiers (e.g. serial, lot number & expiry date)

UDI Example of label IN CASE of RETAIL



Trocars

【REF】: T05-100-CT-A 【SN】: TR160005771

20161001 20190930 **LOT** DO NOT REUSE

STERILE EO Sterilized using ethylene oxide

Do not use if package is damaged

Consult instructions for use

Guangzhou T.K Medical Instrument Co., Ltd.

Address A601 Guangzhou International Business Incubator, Guangzhou Science Park, Guangzhou, China

Tel No. +86 20 3229 0169

Fax No. +86 20 3229 0395

MedNet GmbH,
Borkstrasse 10,
48163 Münster, Germany

0197 6 937845 500430

(11) 161001(17) 190930(10) 116091411

Device Identifier (DI)
"Static" portion
GTIN (product identifier)
EAN13

For devices exclusively intended for retail point of sale, the UDI PIs in AIDC shall not be required to appear on the point of sale packaging.

Production Identifier (PI)
"Dynamic" portion
Application Identifiers (e.g. serial, lot number & expiry date)
GS1 128

UDI Example of label : DPM



Label Example

REF 210024 [LOT] 1D34987 ⏳ 2013-07-30 [QTY] 1
PANALOK® Absorbable Anchor

[35mm] [Rx Only] [STERILE] [EO]

DePuy Mitek, Inc.
325 Paramount Drive Raynham, MA 02767, USA

(01)1038135000016

(17)130730(10)1D34987

REV A

Direct Part Marking

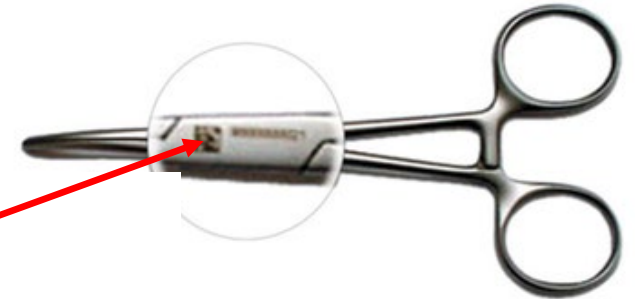
Barcode : GS1 DataMatrix



UDI regulatory requirements	GS1 Standards
Basic UDI-DI « New » level of identification in the EU	GMN (Global Model Number) <i>No Application Identifier (AI) for regulated medical devices</i>
UDI-DI * Device Identifier (DI)	GTIN * Global Trade Item Number
UDI-PI * Production Identifier (PI) <i>(if applicable)</i>	AI * Application Identifier (AI) <ul style="list-style-type: none"> • Expiration date AI(17) - e.g. 141120 • Batch – lot AI(10) - e.g. 1234AB • Serial number AI(21) - e.g. 12345XYZ • Manufacture date AI(11) - e.g. 250717
<i>Production Identifier data will vary by medical device type and manufacturer current practice.</i>	
UDI-DI + UDI-PI = UDI	GTIN or GTIN + AI(s) = UDI



(01) 0 5410013 11100 9
 (17) 160527
 (10) ABC123
 (21) 12345678

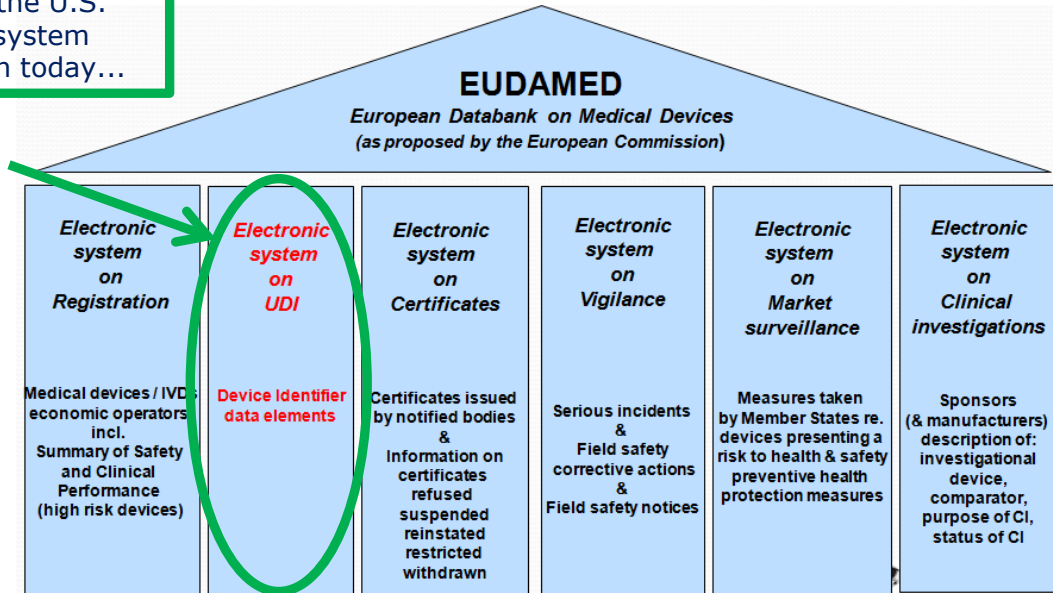


* The HRI Format shall follow the rules of the UDI Issuing Entity

UDI Databases – USA and EU



Part that the U.S.
FDA UDI system
focuses on today...

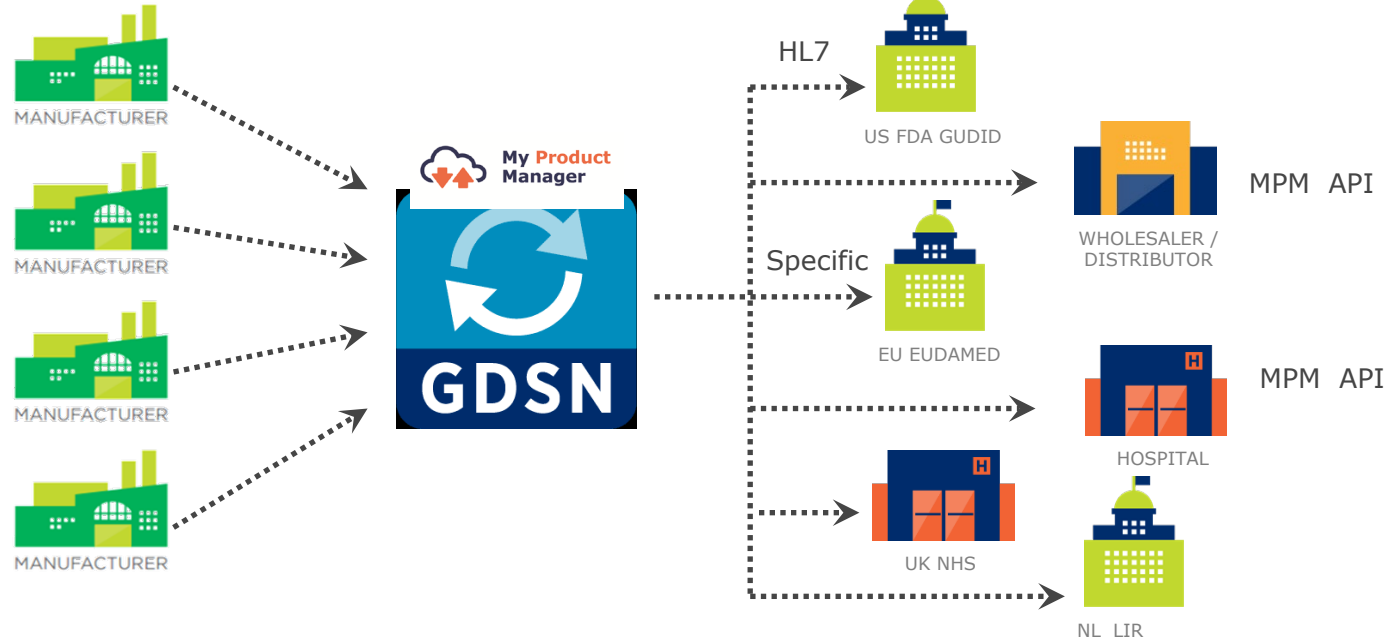


Global Data Synchronisation Network (GDSN)



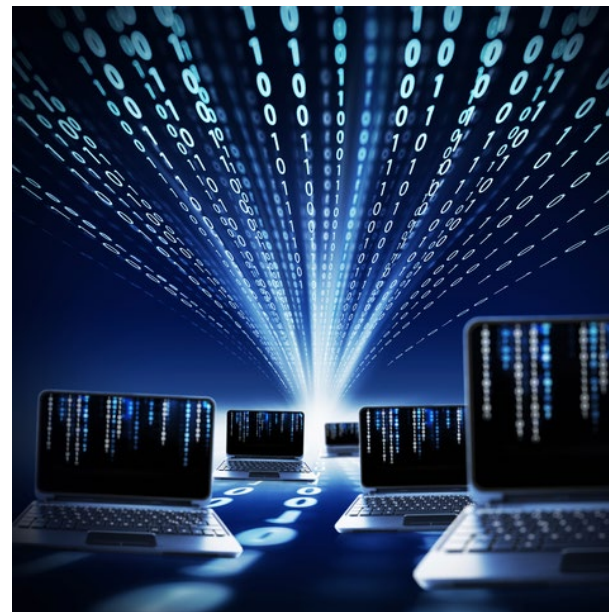
*= UDI databases do not subscribe to the GDSN and are an out of network connection. Data Pools offer the data registration as a value-added service to their customers. This is not governed by GDSN policy.

GDSN mappings are provided by GS1 Healthcare as a courtesy to the industry, it is not a requirement of an Issuing Entity*





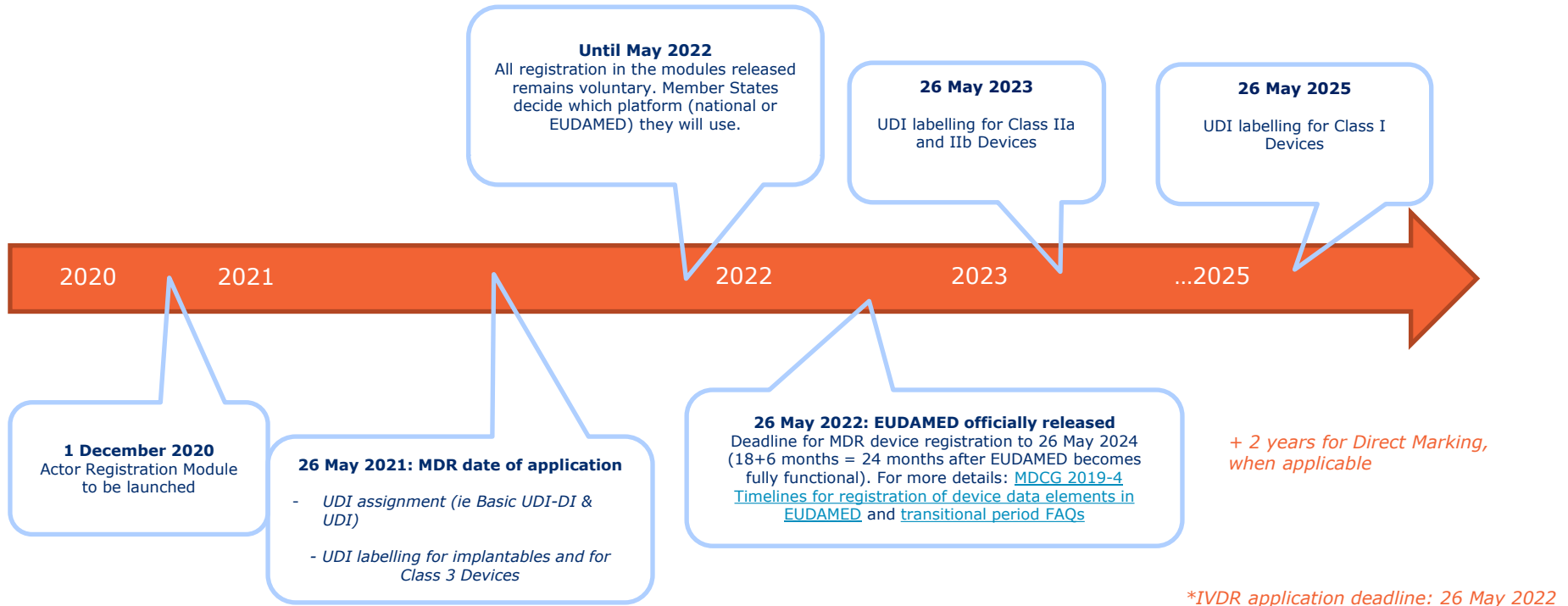
- ECHO (European Collaboration of Healthcare Organisations)
- GS1 MOs, Manufacturers, Hospitals
- ECHO datamodel:
 - Legal requirements (FDA, NHS, Eudamed)
 - Business requirements (hospitals, wholesalers, GPOs,...)
- 2018: phase 1
 - ECHO mandatory data-attributes for medical devices, based on the US FDA legal requirements and the UK NHS requirements
- Roadmap 2018 – 2022
 - Determination business needs: alignment between the stakeholders
 - Pharmaceutical products
 - Medical devices
 - EUDAMED



Where and When to implement UDI?

EU - UDI: EUDAMED timeframe – MDR*

Timeframe subject to changes



Where? Requirements for medical device identification



And more coming



Key take away

The **Healthcare supply chain is global**

After COVID-19 healthcare will need **optimized processes** for a better and safer future

Traceability will stay an important topic during and after the pandemic

UDI will contribute significant to make supply chains efficient and improve patient safety!

Questions? Comments?

Contact pponsaerts@gs1belu.org



Topics

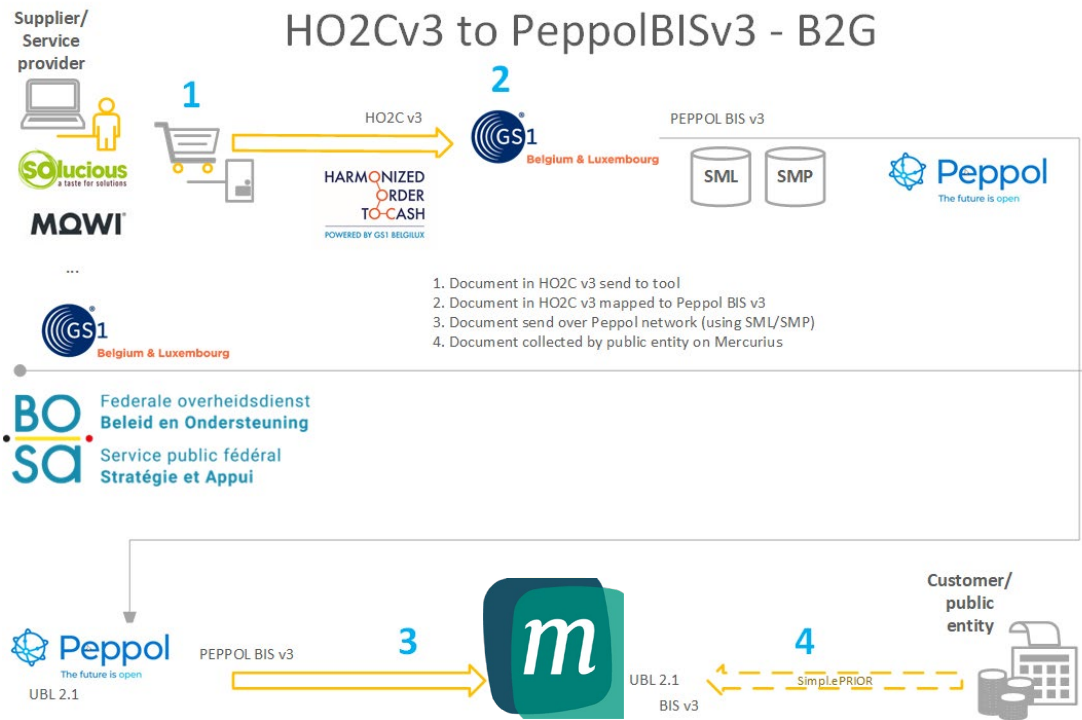
- Welcome
- My Product manager (MPM) update 20' (SL)
- Healthcare 30' (PP)
- **Sectoral data exchange: HO2C (EANCOM - EDIFACT) 15' (DW)**
 - HO2C next release
 - HO2CtoPeppol mapping tool
 - Other news (validation tool, the future of HO2C, ...)
- Cross-sector & cross-border data exchange (Peppol) 30' (DW)
- GS1belu knowledge centre (existing & new) 10' (DW+SL)



HO2C v3.1: next release

- Workgroup HO2C (subgroup EDI committee) limited to members
 - Will discuss proposed changes
 - Align HO2C with EN 16931
 - Align HO2C with minimal legal invoice in Belgium (see later)
 - Specific member requests
 - Minor editorial (typos) changes
 - Add VMI messages (INVRPT, SLSRPT, ORDERS proposal)
- As with HO2C v3.0, changes will be presented in detail to partners later
-> date to be planned when workgroup concludes

HO2C v3+ -> Peppol BIS v3 -> public entities





Update on Mapping tool HO2CtoPeppol

- Changed schemeID 9956 to 0208 (Supplier & Customer)
- Add elements 'minimal legal invoice in Belgium'
 - Customer address data from NAD+BY (no longer from NAD+IV)
 - RPR -> RFF+GN:RPR Brussel' (after NAD+SU)
 - Legal form -> add to name from NAD+BY
 - ...
- Customer can be identified by GLN, CBEnr & VATnr
 - -> first check receiver GLN UNB in receiving capabilities Peppol
 - -> Yes = use GLN (e.g. healthcare)
 - -> No (e.g. dummy GLN Mercurius – 5488888006515/5488888010581)
 - Use CBEnr (preferred or if not subject to VAT)
 - Use VATnr (if no CBE after NAD+IV)
- Old Mercurius interface has been decommissioned
- More info in cross-sector newsletter -> to [subscribe](#)
- Free to use for registered partners



HO2C v3: news on the validation tool

- Goal: increase data quality (based on schematron technology cfr. Peppol)
- Limited to HO2C v3 INVOIC (as milestone 1)
- We continue the internal finetuning work on draft (business rules) – low priority
- Beta-version available (Github)
- Plans: support API + GUI (+ track & trace) website (HO2C v3.1)
+ keep usage free (public availability)
- We dream of sending HO2C over the Peppol network (so we need schematrons)
- -> interested? [Contact us](#)



HO2C: the future?

- GS1 GO started a semantics project (linked to UN/CEFACT models)
 - Goal: support multiple syntaxes based on 1 semantic data model (cfr. EN 16931)
 - Start with Semantic Data Dictionary (linked to GDD) -> Business Terms + define approach & writing rules
 - Develop data models (INVOIC, ORDERS, DESADV, eReceipt, ...)
 - Map to syntaxes: GS1 XML, UN/CEFACT, EANCOM, UBL, API, ...
 - Other messages (but not limited to O2C) like DESADV, INVOIC, ...
 - Even outside O2C -> clinical trials, ereceipt, ...
 - In the long run: we need to align this with HO2C (end next year?)
- EDI enabler: project eCommerce wholesaler
 - > POC with Growzer & Coca-Cola is finalizing
 - > other suppliers and tools (web platforms) will follow

Questions? Comments?

Contact dwillekens@gs1belu.org



Topics



- Welcome
- My Product manager (MPM) update 30' (SL)
- Healthcare 30' (PP)
- Sectoral data exchange: HO2C (EANCOM - EDIFACT) 15' (DW)
- **Cross-sector & cross-border data exchange (Peppol) 30' (DW)**
 - Update on identification schemeID 0208 & old Peppol BIS v2 format (deadlines)
 - schemeID 0209 (ISO 6523) holding all GS1 identifiers: where to use
 - Peppol international invoicing: where are we?
 - Update Belgian Business Expert Group (Federation Belgian Enterprises)
 - CTC (realtime VAT declaration): nearby future?
 - Changes to EN 16931 (CEN TC 434 WG1)
- GS1belu knowledge centre (existing & new) 10' (DW+SL)

SchemeID 0208 (Belgian enterprise number)



- Has replaced 9956 (is deprecated as of 17/5/2021)
- Today -> 9956 no longer accepted in Peppol validation (spring release Peppol)
- 9956 will disappear from receiving capabilities

- Some advice:
 - Use schemeID 0208 where applicable
 - In BE schemeID 0208 most suited in EndpointID (electronic address)
-> some receivers use GLN (without declaring CBE & VATnr in rec. capabilities)
 - Align references used with CBE data (minimal legal Peppol invoice in Belgium)
 - Notice [Hermes](#) registrations in Peppol receiving capabilities
<http://smp.hermes-belgium.be/iso6523-actorid-upis::0208:0597870683/services>

Decommissioning old BIS Billing 2.0



- BE government (Mercurius) phased out (incoming) non-BIS 3.0 (including BIS 2.0)
- Fazing out Peppol BIS v2 in B2B is ongoing (no deadline yet)
- Do not send BIS v2 anymore as sending AP (C2) -> C1 might be involved (B2G)

- However ... Mercurius is still sending MLR BIS v2 !!!
 - IMR will replace MLR
 - Transition period 1/10/2021 – 31/3/2022
 - Multiple subsequent status messages are possible
 - From “message received” to “Paid”
 - Logic order of status sent is important (e.g. no CA after AP/RE)
 - NL also focussing on IMR support

SchemeID 0209 (GS1 identifiers) in ISO 6523



- Existing GS1 identifiers:
 - 0088: GLN (alternative for enterprise number and VATnr)
 - 0160: GTIN (global trade item number)
- [GS1 Application Standard for usage of ISO/IEC 6523 ICD 0209](#)
 - The code will include an application identifier indicating the type of GS1 identification key used for an object, followed by the value of the key. The string can be completed by other application identifiers indicating attributes related to the GS1 ID key and the value of these attributes related to the identified object.
 - Variable length, depending on the type of GS1 ID key and attributes being encoded
 - Can be used in addressing (with limitations) and data exchange environments
 - `<cac:StandardItemIdentification>` 8018 = GSRN
 `<cbc:ID schemeID="0209">8018541448860008309598</cbc:ID>`
`</cac:StandardItemIdentification>`
 - See article in cross-sector newsletter (Vlaams Energie Bedrijf (VEB))

OpenPeppol: international invoicing



- PINT =
The Peppol International Invoicing Model (PINT) is a semantic data model that defines a set of business terms in an invoice to be used in an international context
- PINT documents ready for review (in working group)
 - [Data model spreadsheet](#)
 - [Specification](#)
 - [Guideline](#)
 - DDTS document describing impact on receiving capabilities (**wildcard**)
- GS1belu volunteered to test Peppol BIS v3.0 scenarios
 - > to get an idea of impact on current document types (minor)
 - > more to come ...



Feedback Business Expert Group (BEG)

- Objective BEG: implementation of Belgian scenarios in PeppolBisV3.
 - 5 scenarios are validated (yet)
 - Notice '[minimal invoice](#)' -> Belgian requirements on top of Peppol BIS v3.0
 - And published on einvoice.belgium.be (and others e.g. GS1belu, FEB, ...)
 - Other scenarios / sector will follow (e.g. social secretariats (USS))
 - Domestic VAT scenarios (Out-of-scope \neq Zero \neq Exempt -> but all are 0%)
- Establishment of a steering committee to prepare the plenary meetings
- Members of the steering committee: VBO, Agoria, BOSA, Flemish Government and GS1 Belgium & Luxembourg. Next meeting ?
- Next plenary meeting: ?



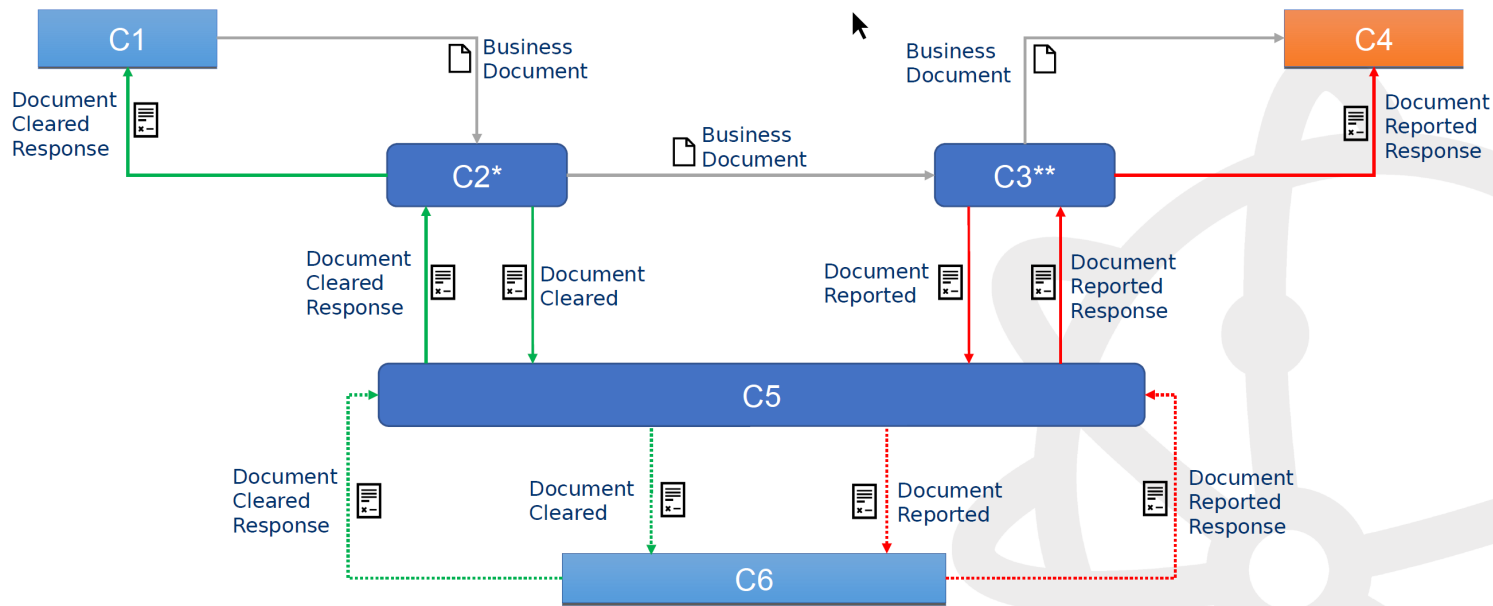
Tax clearance – Continuous Transaction Controls

- GS1belu participating in OpenPeppol CTC workgroup
- ‘Shaping the landscape’
 - Identifying different scenarios
 - Establishing liaison with tax authorities
 - Planning
- Europe:
 - Italy: already in place
 - France: plans for 2023 -> <http://fnfe-mpe.org/>
 - Belgium?
- Goal = real time tax declaration (and reporting) & closing tax gap



CTC – Proof of Concept (Peppol)

Simulation Environment – domestic flows



Changes to the EN 16931 (CEN TC 434 WG1)



- TC 434 WG1 (GS1belu participating in Belgian mirror committee NBN (Agoria))
- Member states are voting on 38 amendments
- Next steps
 - Syntax mapping
 - ...
 - Cen work finalized (incl. translation 16/9/2022)
 - EU Decision & publication -> 24/5/2024

Changes to the EN 16931 (Amendments)



- Inclusive prices (optional element – no calculation)
- Support >2 decimals
- Split payment
- Xml attachments (but limited – no extensions)
- Detailed information on paid amounts
- German skonto (cfr. BE scenario cash discount published on invoice.Belgium.be)
- Car spare parts (cfr. BE scenario published on invoice.Belgium.be)
- Extra charges on behalf of third party not part of the invoice
- Mix detail lines S(tandard) & O(ut of scope) in 1 invoice
- Multiple delivery & order references at line level (EU)
- Take out negative credit notes (only allow negative invoices)
- ...

Tips & tricks



- BE sender align with [Peppol minimal legal invoice in Belgium](https://einvoice.belgium.be) (einvoice.belgium.be)
- Use 0208 instead of 9956 (wherever allowed)
- Some statistics: https://ionite.net/peppol_statistics/?country=BE
- **Senders list published by Flemish government:** [link](#)
-> Mercurius + major Peppol Access points in Belgium
- Peppol fall release 2021:
-> add document type codes 102 (tax notification) & 388 (tax invoice)
-> solution for e.g. property tax & withholding tax documents (“invoices”)
- GS1belu will participate in [e-Invoicing summit 2021](https://heliview.be) 21/10/2021 (heliview.be)
- GS1belu was also present in [e-Fa talkshows Vlaamse Overheid](#) 26/5/2021
- GS1belu in jury of [e-Fa awards](#) 23/6/2021
- GS1belu national Forum 2021 7/10/2021

Questions? Comments?

Contact dwillekens@gs1belu.org



Topics

- Welcome
- My Product manager (MPM) update 20' (SL)
- Healthcare
- Sectoral data exchange: HO2C (EANCOM - EDIFACT) 15' (DW)
- Cross-sector & cross-border data exchange (Peppol) 30' (DW)
- **GS1belu knowledge centre (existing & new) 10' (DW+SL)**
 - Cross-sector (Peppol) (DW)
 - My Product Manager (SL)

GS1belu knowledge centre Peppol



- [GS1 Trainings \(transactional data exchange\)](#)
- Getting familiar with Peppol:
 - Basic (**3/6 – 15/9**)
 - Advanced (**17/6 – 29/9**)
- Peppol master class (technisch)
 - Peppol detecting receiving capabilities (Peppol first) (**23/9**)
 - Partner Identifiers in Peppol and how link to ERP
 - eOrdering in Peppol incl. orderresponse & punch-out (ecommerce) (**2/12**)
 - Peppol XML validation (manually & automated) + Peppol fall release (**4/11**)
 - Peppol minimal legal electronic invoice in Belgium (**18/11**)
- Partner event – only registered partners (**9/9 – 16/12**)
- HO2C v3 to Peppol BIS v3 (mapping tool)
- More info: peppol@gs1belu.org
- Free for members & partners



Peppol

The future is open

GS1belu: our cross-sector general projects



- OpenPEPPOL (MoU)
 - F2F (now online): 2x / year
 - International invoicing + changes in receiving capabilities (SMP impact)
 - Continuous Transaction Control (5-corner project): real time VAT decl. & reporting)
- CEN TC434 (eInvoicing)
 - WG1 changing the EN 16931 (core) + ereceipt
 - WG7 building a registry for CIUS & extensions (interoperability)
- CEN TC440 (eProcurement)
 - WG6 eOrdering
 - WG7 despatch advice + aligning eCMR solutions in EU (+ Peppol in logistics)
- Correct implementation Peppol in large ERP systems
 - e.g. Microsoft Business Central: global (Peppol BIS v3) + country-specific (CBEnr)
- E-Invoicing Summit 2021 – 21/10/2021 (22/10/2021-22/11/2021 = online event)
- ...

GS1belu knowledge centre My Product Manager

- [GS1 Trainings \(MPM\)](#)
 - Dutch: 17/06
 - French: 24/06
 - English on request
- [Reminder: technical documentation MPM](#)
- My Product Manager Manual
 - French
 - Dutch
 - **English : NEW**

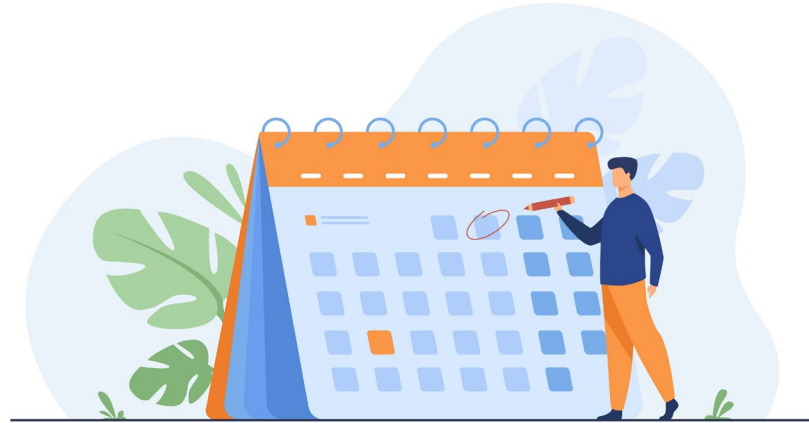
<p>Which product data?</p> <p>What types of product information does My Product Manager contain?</p> <p>More info</p>	<p>Entering data via My Product Manager Share</p> <p>How are product details entered into My Product Manager?</p> <p>More info</p>	<p>Receiving data via My Product Manager Share</p> <p>How can you receive product sheets from My Product Manager?</p> <p>More info</p>
<p>Global Data Synchronisation Network (GDSN)</p> <p>What is GDSN?</p> <p>What is the relationship between My Product Manager and GDSN?</p> <p>More info</p>	<p>Who uses My Product Manager?</p> <p>Which suppliers register product information in My Product Manager? Which companies receive data from My Product Manager? Which companies are active on the Global Data Synchronisation Network?</p> <p>More info</p>	<p>Quality of the product data</p> <p>How does GS1 check the quality of product data? How are you able to see the quality of your product sheets?</p> <p>More info</p>
<p>Pack shot photos</p> <p>Everything you need to know about mandatory pack shot photos for your product sheets.</p> <p>More information</p>	<p>Rates and subscription</p> <p>How much does a My Product Manager subscription cost? How do I access the Platform?</p> <p>More info</p>	<p>Documentation</p> <p>All documentation on the datamodel of standardised product data sheets and systems for managing product information in one place.</p> <p>More info</p>

Questions or suggestions

Contact us marketing@gs1belu.org

Next GS1 partners event

9 September 2021



An illustration of two hands, one on the left and one on the right, holding up a rectangular orange banner. The banner has the words "THANK YOU" written in large, white, bold, sans-serif capital letters. The hands are wearing dark suit sleeves with white cuffs. The background is a solid light blue color.

**THANK
YOU**